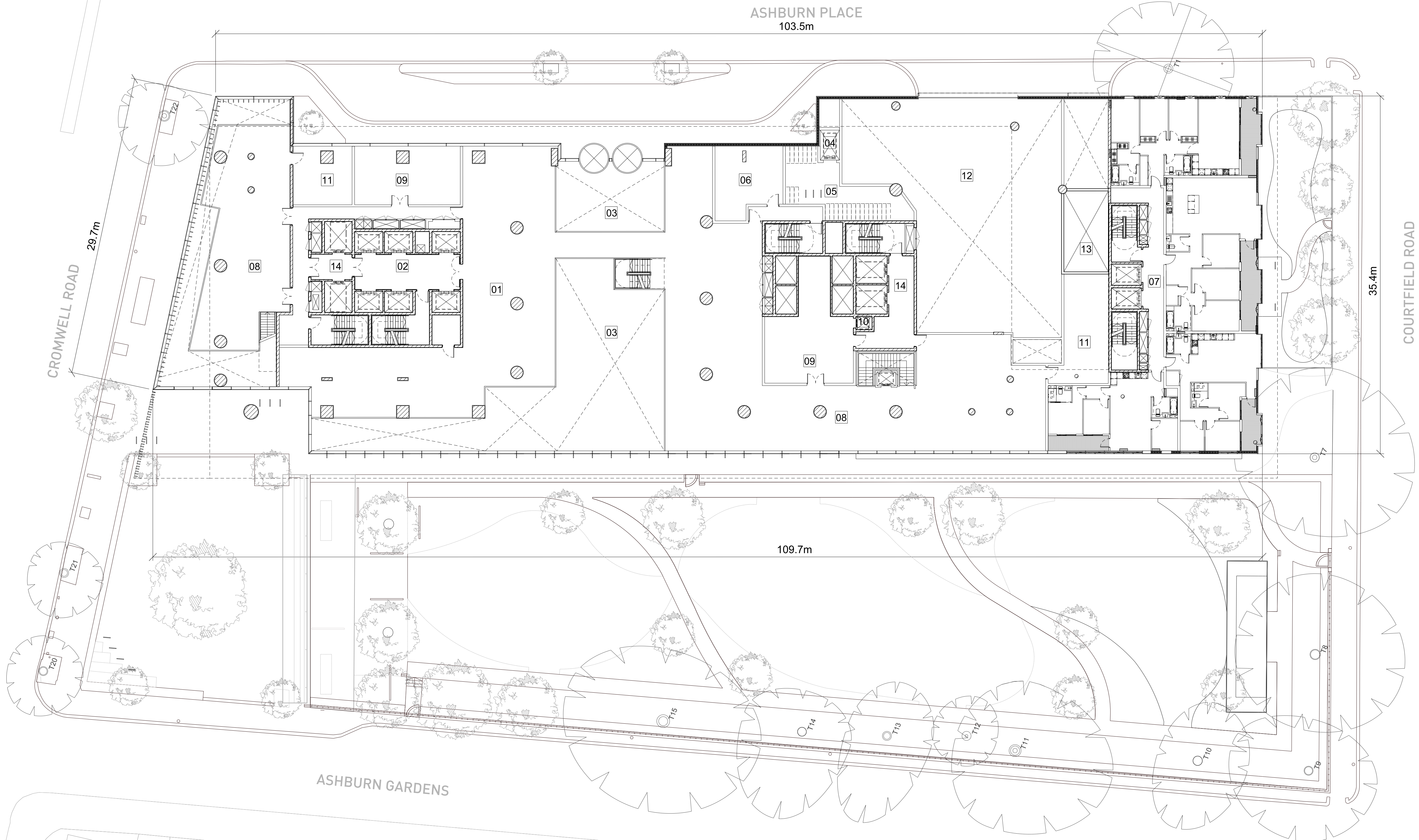


- KEY
- 01 HOTEL LOUNGE
  - 02 HOTEL LIFT LOBBY/CORE
  - 03 VOID OVER HOTEL LOBBY
  - 04 HOTEL CYCLE LIFT
  - 05 HOTEL CYCLE STORE
  - 06 HOTEL PLANT ROOM
  - 07 AFFORDABLE LIFT LOBBY/CORE
  - 08 RESTAURANT/BAR
  - 09 KITCHEN
  - 10 FOOD HOIST
  - 11 WC
  - 12 VOID OVER LOADING BAY
  - 13 CAR LIFT OVER-RUN
  - 14 SERVICE LIFT LOBBY

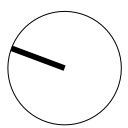


This drawing is copyright.  
Do not scale off dimensions.  
All dimensions to be checked on site by contractor.  
Contractor to report any dimensional discrepancies,  
errors or omissions prior to commencing on site.



NOTE:

NORTH



Rev	Date	Description	Rev	Date	Description
-	15/06/2019	Full Planning Application			
A	11/01/2019	GLA Cakhi Amendments			

Project Title  
Kensington Forum Hotel  
Kensington, London

Status  
PLANNING

Drawing Title  
Level 00 Mezzanine Floor Plan

Job No 10106	Scale 1:200(A0) NTS(A3)	Date JAN 2019
Drawing No 10106-A-DRG-ZZ-G200-2000MZ-PL	Revision A	

**simpsonhaugh**

MANCHESTER  
Riverside, 4 Commercial St  
M4 6DT  
Tel: 0161 835 2345  
www.simpsonhaugh.com

LONDON  
2nd Roberts Place  
LONDON EC1A 3AB  
Tel: 020 7581 9800  
mail@simpsonhaugh.com